

LEGEND

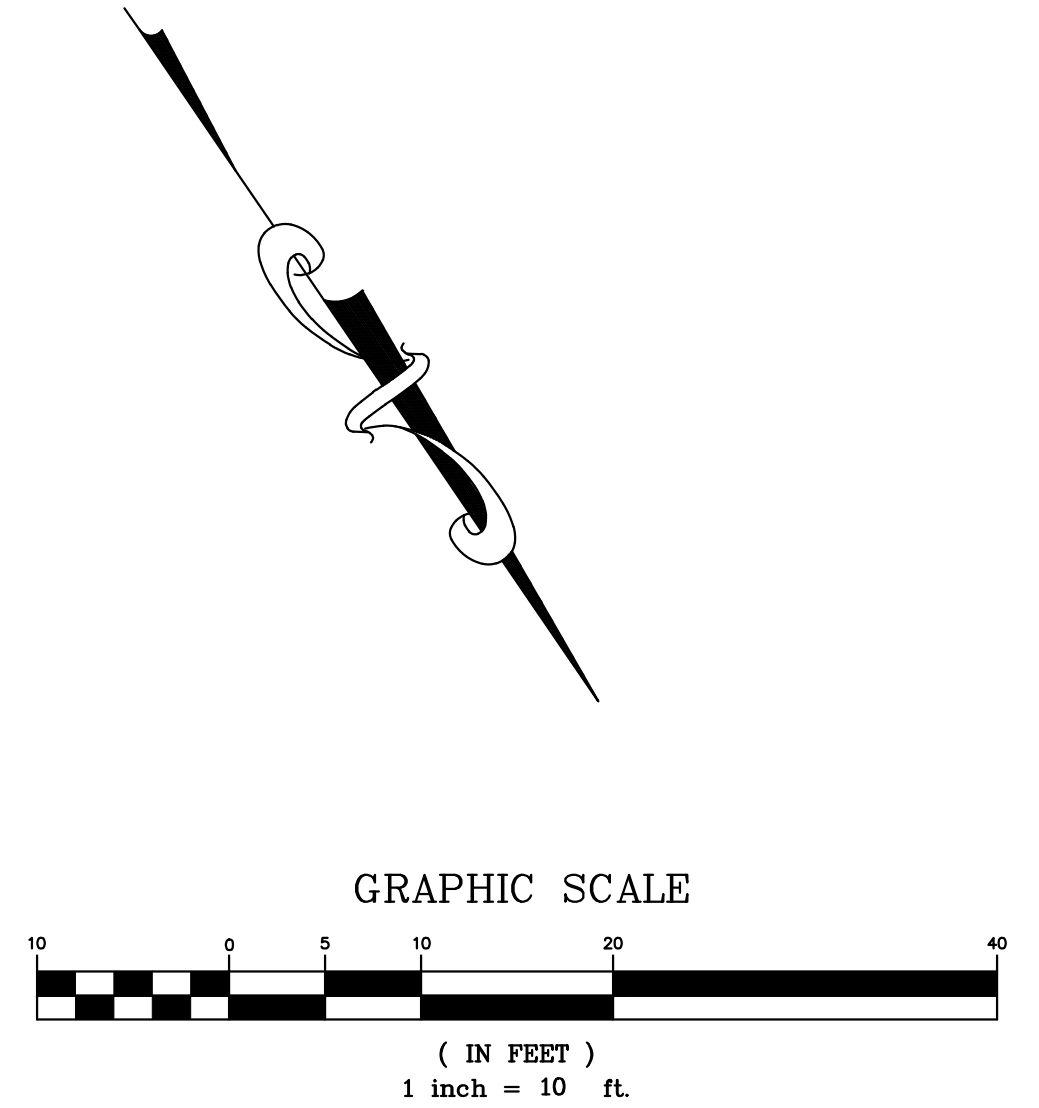
- | | |
|---------|---------------------------|
| --- | PROPERTY LINE |
| AC PAVE | ASPHALT CONCRETE PAVEMENT |
| CB | CATCH BASIN |
| CONC | CONCRETE |
| FH | FIRE HYDRANT |
| FL | FLOWLINE |
| GA | GUY ANCHOR |
| INV | INVERT |
| JP | JOINT UTILITY POLE |
| SDMH | STORM DRAIN MANHOLE |
| SSMH | SANITARY SEWER MANHOLE |
| TC | TOP OF CURB |
| TG | TOP OF GRATE |
| TW | TOP OF WALL |
| WM | WATER METER |
| WV | WATER VALVE |
| ● | TREE W/ SIZE |
| X-X | FENCE |
| SS | SANITARY SEWER LINE |
| SD | STORM DRAIN LINE |

LOT AREA:

= 16,645 SQ. FT. ±
 = 0.382 ACRES ±

UTILITY NOTE:

THE UTILITIES EXISTING ON THE SURFACE AND SHOWN ON THIS DRAWING HAVE BEEN LOCATED BY FIELD SURVEY. ALL UNDERGROUND UTILITIES SHOWN ON THIS DRAWING ARE FROM RECORDS OF THE VARIOUS UTILITY COMPANIES AND THE SURVEYOR/ENGINEER DOES NOT ASSUME RESPONSIBILITY FOR THEIR COMPLETENESS, INDICATED LOCATION, OR SIZE. RECORD UTILITY LOCATION SHOULD BE CONFIRMED BY EXPOSING THE UTILITY.



REV.	DESCRIPTION	BY:	DATE:



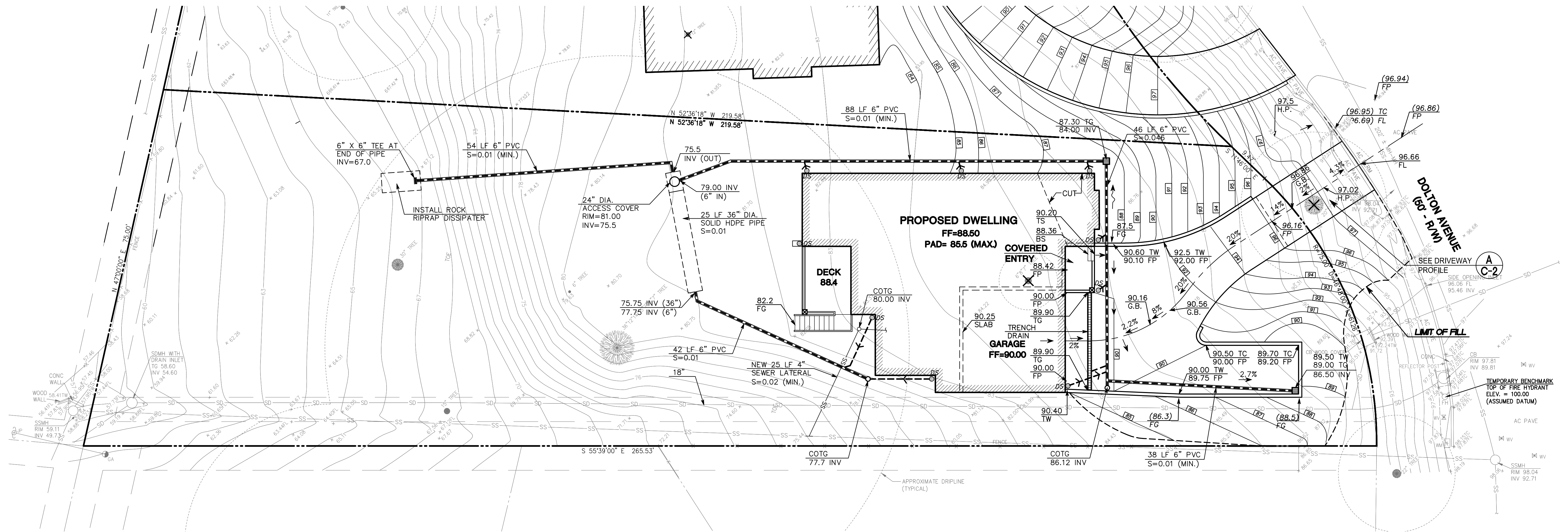
MALEOD AND ASSOCIATES
 CIVIL ENGINEERING • LAND SURVEYING
 905 CENTER STREET • SAN CARLOS • CA 94070 • (650) 593-8580

PREPARED FOR:
 ERNST DEVELOPMENT, INC.

TOPOGRAPHIC SURVEY PLAN
 DOLTON AVENUE
 A.P.N. 049-110-080
 LOT 46, BLOCK 31, 13 MAPS 52-55
 UNINCORPORATED SAN MATEO COUNTY CALIFORNIA

DRAWN BY: MDL
 DESIGNED BY: ---
 CHECKED BY: DGM
 SCALE: 1"=10'
 DATE: 01-07-20
 DRAWING NO.
 4716-TOPO-LOT 46

SHEET
C-1
 1 OF 4



UTILITY NOTE:

THE UTILITIES EXISTING ON THE SURFACE AND SHOWN ON THIS DRAWING HAVE BEEN LOCATED BY FIELD SURVEY. ALL UNDERGROUND UTILITIES SHOWN ON THIS DRAWING ARE FROM RECORDS OF THE VARIOUS UTILITY COMPANIES AND THE SURVEYOR/ENGINEER DOES NOT ASSUME RESPONSIBILITY FOR THEIR COMPLETENESS, INDICATED LOCATION, OR SIZE. RECORD UTILITY LOCATION SHOULD BE CONFIRMED BY EXPOSING THE UTILITY.

GRADING QUANTITIES:

CUT = 10 C.Y. ±
 FILL = 260 C.Y. ±

LOT AREA:

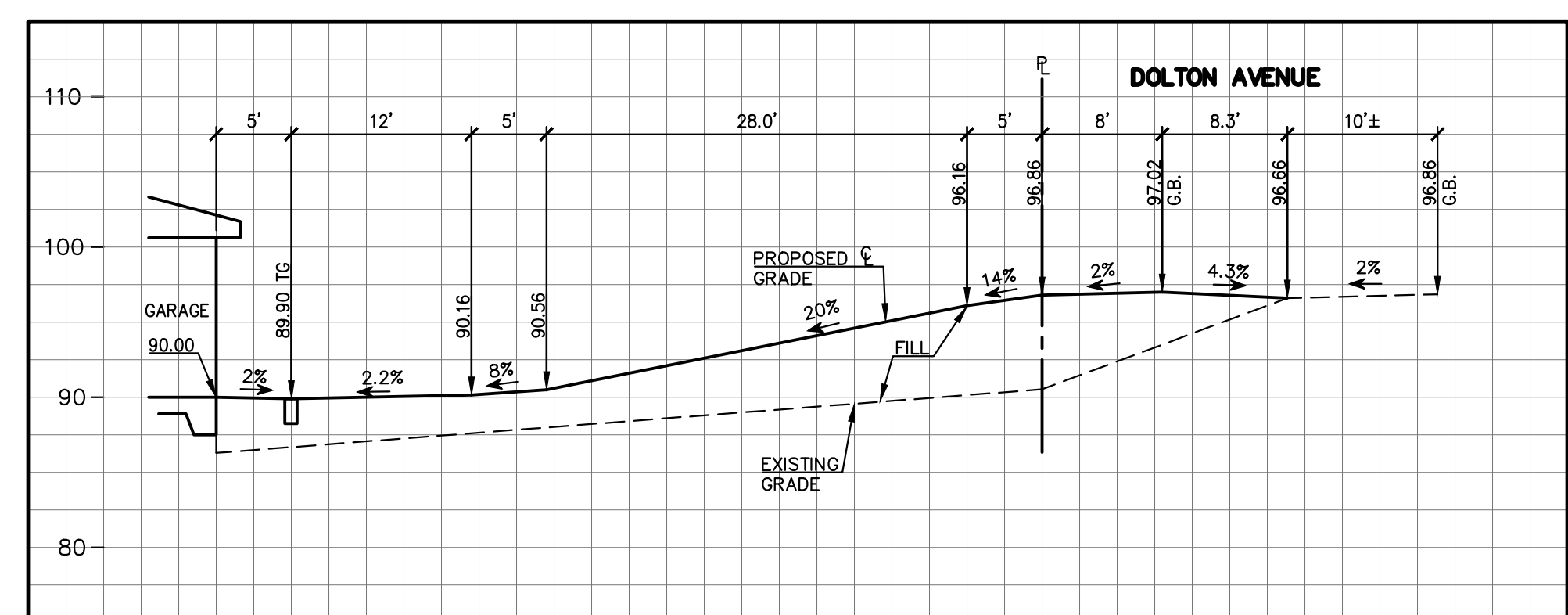
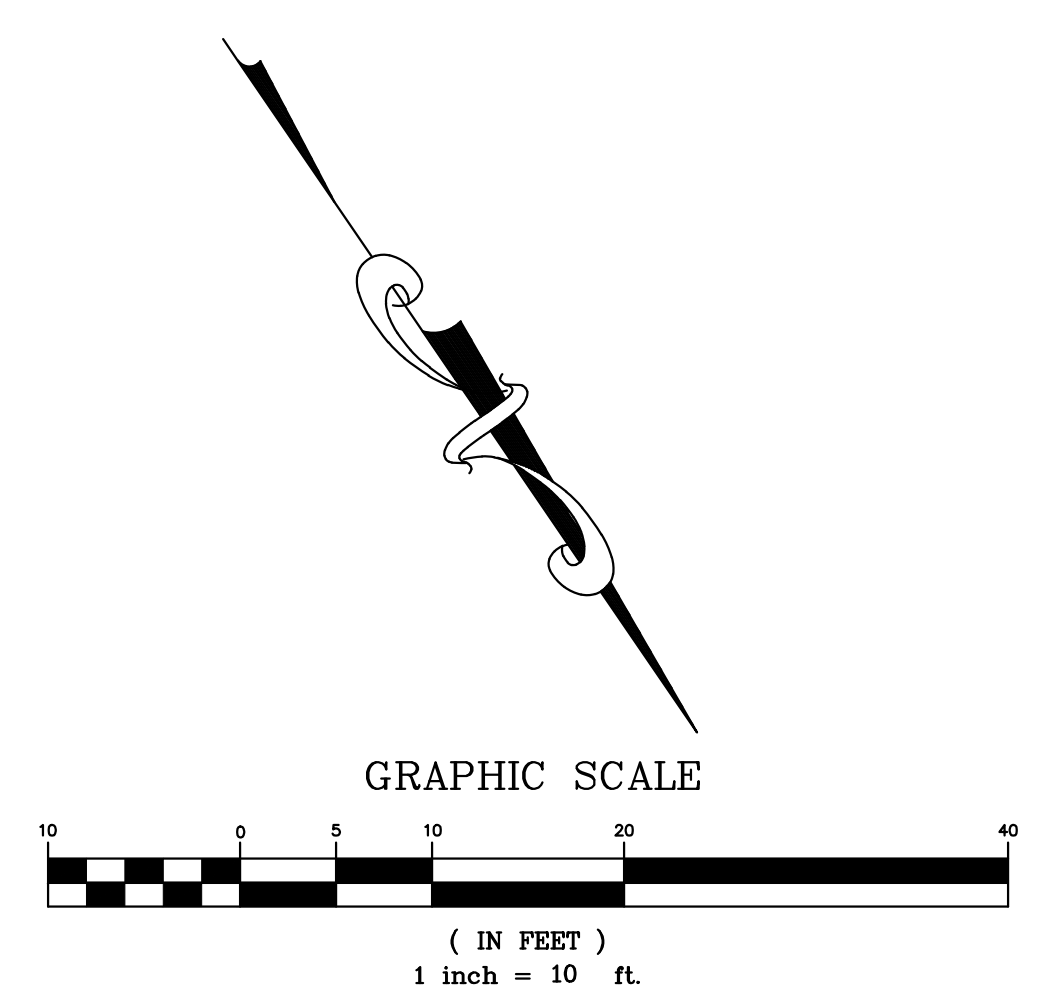
A = 16,645 sq. ft. ±
 0.382 ACRES ±

GENERAL NOTES:

- ALL MATERIALS SHALL BE FURNISHED BY AND INSTALLED BY THE CONTRACTOR UNLESS OTHERWISE NOTED.
- WHEN APPLICABLE, ALL CONSTRUCTION MATERIALS AND METHODS SHALL COMPLY WITH THE ORDINANCES, SPECIFICATIONS AND STANDARDS OF THE COUNTY OF SAN MATEO, UNLESS OTHERWISE NOTED.
- CONTRACTOR SHALL NOTIFY UNDERGROUND SERVICE ALERT (U.S.A.) PRIOR TO START OF CONSTRUCTION. PHONE (800) 642-2444.
- THE CONTRACTOR SHALL BE RESPONSIBLE FOR DISTRIBUTING ANY EXCESS MATERIAL OR SUPPLYING MATERIAL FOR DEFICIENCIES TO BRING DRIVEWAY AND BUILDING PADS TO REQUIRED GRADE.
- THE CONTRACTOR IS RESPONSIBLE FOR MATCHING EXISTING SURROUNDING LANDSCAPE AND OTHER IMPROVEMENTS WITH A SMOOTH TRANSITION IN PAVING, GRADING, ETC., AND TO AVOID ABRUPT OR APPARENT CHANGES OR CROSS SLOPES, LOW SPOTS OR HAZARDOUS CONDITIONS.
- THE CONTRACTOR SHALL OBTAIN ALL NECESSARY PERMITS FOR ALL WORK SHOWN ON THIS PLAN.

LEGEND:

AC PAVE	PROPERTY LINE
BS	ASPHALT CONCRETE PAVEMENT
CONC	BOTTOM OF STEP
COTG	CONCRETE
DS Ø	CLEANOUT TO GRADE
DS Ø →	DOWNSPOUT TO DISPERSE ON IMPERVIOUS SURFACE
DS □	CONNECT DOWNSPOUT WITH 4" PVC AT 2% MIN.
EP	DOWNSPOUT WITH PRECAST CONCRETE SPLASH BLOCK
FF	EDGE OF PAVEMENT
FG	FINISH FLOOR
FL	FIELD GRADE
FP	FLOWLINE
GB	FINISH PAVE
H.P.	GRADE BREAK
INV	HIGH POINT
SSMH	INVERT
TC	SANITARY SEWER MANHOLE
TG	TOP OF CURB
TS	TOP OF GRATE
TW	TOP OF STEP
● 12" TREE	TOP OF WALL
✕ 12" TREE	TREE W/ SIZE
-X-X-	EXIST. TREE TO BE REMOVED
-SS-	FENCE
-[95]-	SANITARY SEWER LINE
-[]-	NEW STORM DRAIN LINE
-[]-	NEW CONTOUR
-[]-	SWALE
-[]-	SURFACE RUNOFF DIRECTION
-[]-	NEW DRAIN INLET



A DRIVEWAY C PROFILE
 SCALE: 1"=10' (V & H)

REGISTERED PROFESSIONAL ENGINEER
 FRANCIS G. MACLEOD
 No. 35048
 CIVIL
 STATE OF CALIFORNIA

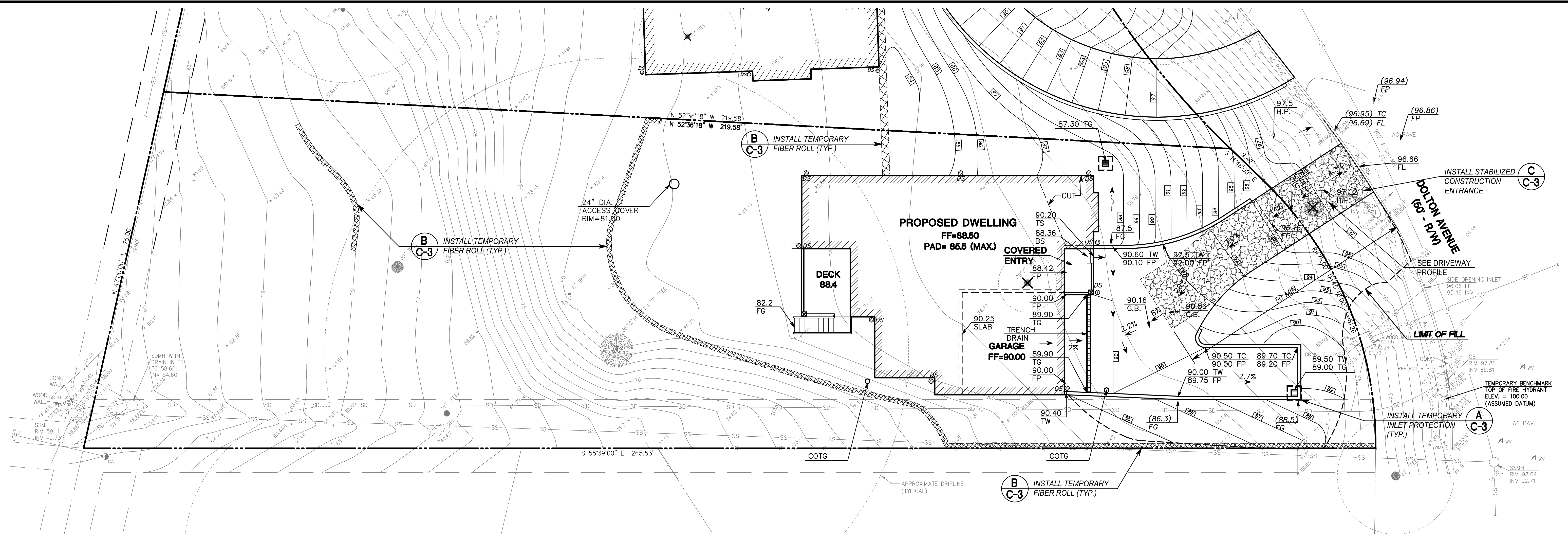
MACLEOD AND ASSOCIATES
 CIVIL ENGINEERING • LAND SURVEYING
 965 CENTER STREET • SAN CARLOS, CA 94070 • (650) 593-8580

PREPARED FOR:
 ERNST DEVELOPMENT, INC.
 DOLTON AVENUE
 A.P.N. 049-110-080
 SAN MATEO COUNTY CALIFORNIA

PRELIMINARY GRADING AND DRAINAGE PLAN

DRAWN BY: AAP
 DESIGNED BY: VPG
 CHECKED BY: DGM
 SCALE: 1"=10'
 DATE: 08/24/20
 DRAWING NO. 4716-GRAD-LOT 46
 SHEET **C-2**
 2 OF 4

DATE: 05/05/21
 BY: VPG
 DESCRIPTION: PER SMC P.W. COMMENTS
 REV.:



REV.	DESCRIPTION	DATE
1	PER SMC P.W. COMMENTS	05/05/21



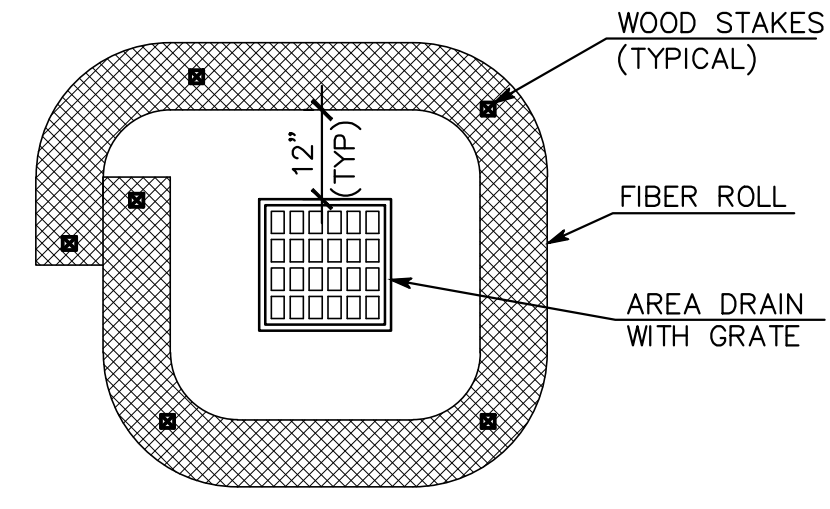
MALEOD AND ASSOCIATES
 CIVIL ENGINEERING • LAND SURVEYING
 905 CENTER STREET • SAN CARLOS, CA 94070 • (650) 593-8580

PREPARED FOR:
 ERNST DEVELOPMENT, INC.

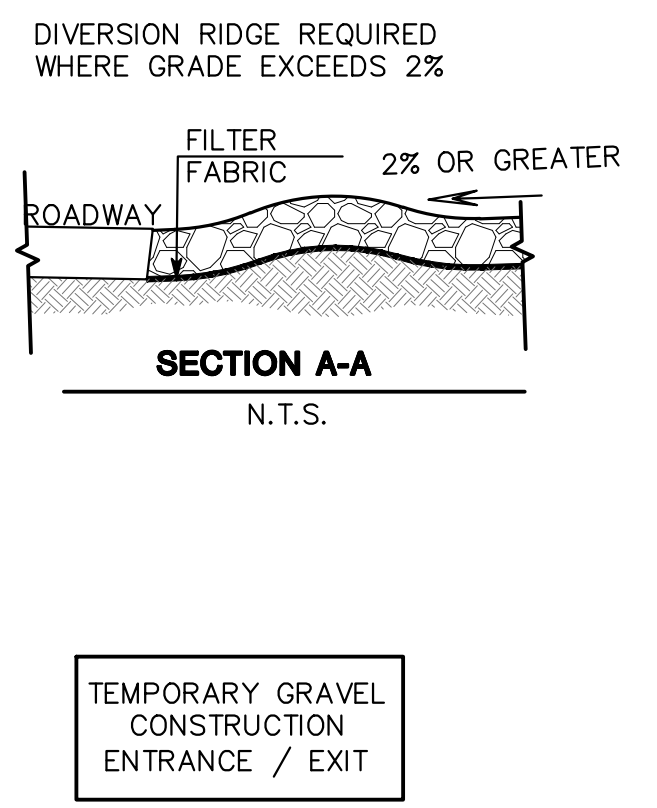
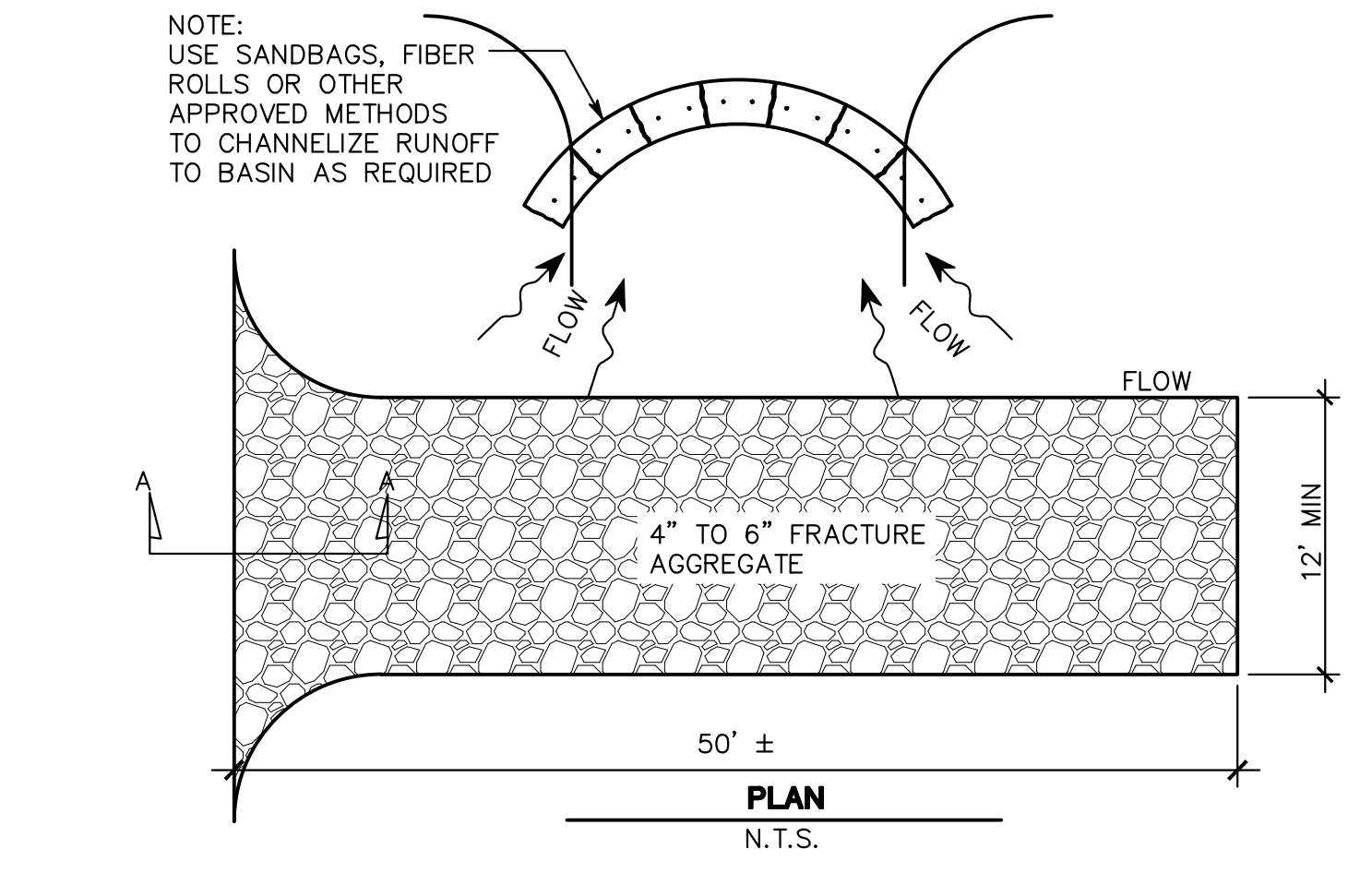
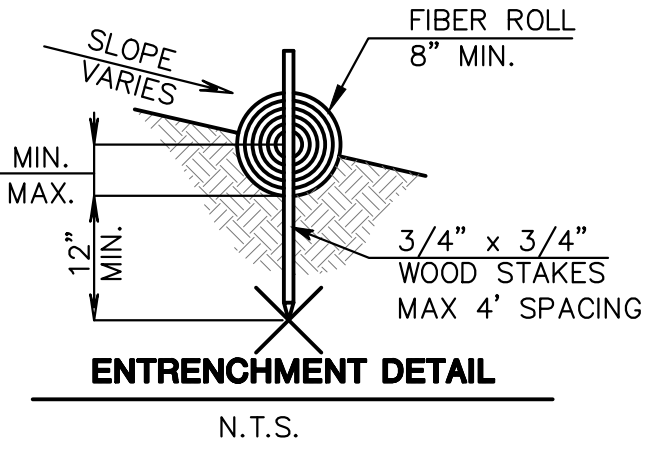
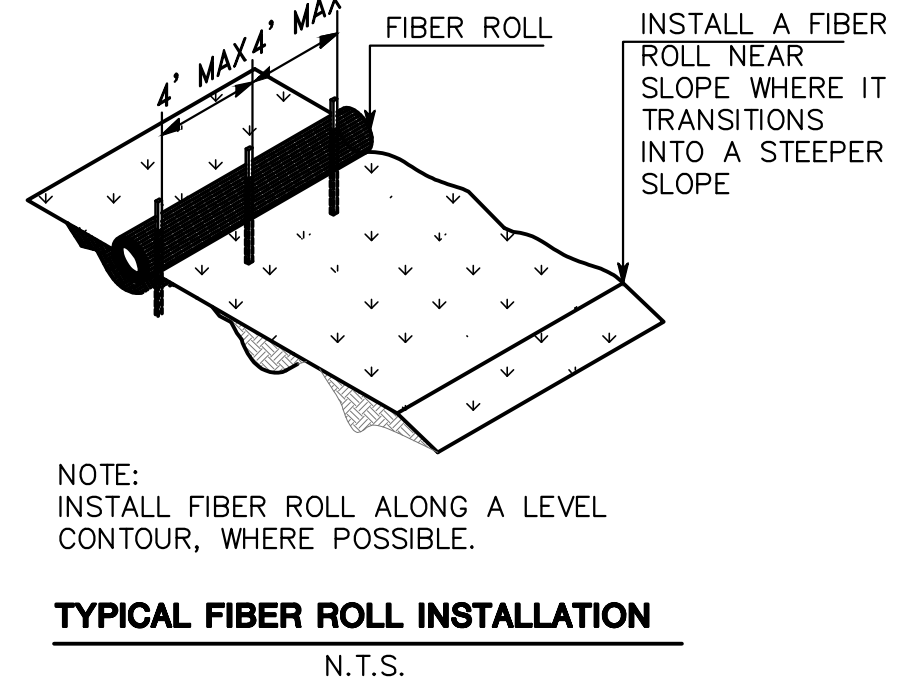
EROSION & SEDIMENTATION CONTROL PLAN
 DOLTON AVENUE
 A.P.N. 049-110-070
 SAN MATEO COUNTY, CALIFORNIA
 UNINCORPORATED

DRAWN BY:	AAP
DESIGNED BY:	VPG
CHECKED BY:	DGM
SCALE:	1"=10'
DATE:	08/24/20
DRAWING NO.	4716-EROS-LOT 46
SHEET	C-3

A DRAIN INLET PROTECTION DETAIL
 SCALE: (NOT TO SCALE)



B FIBER ROLL DETAIL
 SCALE: (NOT TO SCALE)



DESIGN AND CONSTRUCTION SPECIFICATIONS FOR CONSTRUCTION ENTRANCE:

1. THE MATERIAL FOR CONSTRUCTION OF THE PAD SHALL BE 4 TO 6 INCH STONE.
2. THE THICKNESS OF THE PAD SHALL NOT BE LESS THAN 12 INCHES.
3. THE WIDTH OF THE PAD SHALL NOT BE LESS THAN THE FULL WIDTH OF ALL POINTS OF INGRESS AND EGRESS.
4. THE ENTRANCE SHALL BE MAINTAINED IN A CONDITION THAT WILL PREVENT TRACKING OR FLOWING OF SEDIMENT ONTO PUBLIC RIGHT-OF-WAY. THIS MAY REQUIRE PERIODIC TOP DRESSING WITH ADDITIONAL STONE AS CONDITIONS DEMAND, AND REPAIR AND/OR CLEANUP OF ANY MEASURES USED TO TRAP SEDIMENT. ALL SEDIMENT SPILLED, DROPPED, WASHED OR TRACKED ONTO PUBLIC RIGHTS-OF-WAY SHALL BE REMOVED IMMEDIATELY.
5. WHEN WASHING IS REQUIRED, IT SHALL BE DONE ON AN AREA STABILIZED WITH CRUSHED STONE THAT DRAINS INTO AN APPROVED SEDIMENT TRAP OR SEDIMENT BASIN.

EROSION CONTROL NOTES:

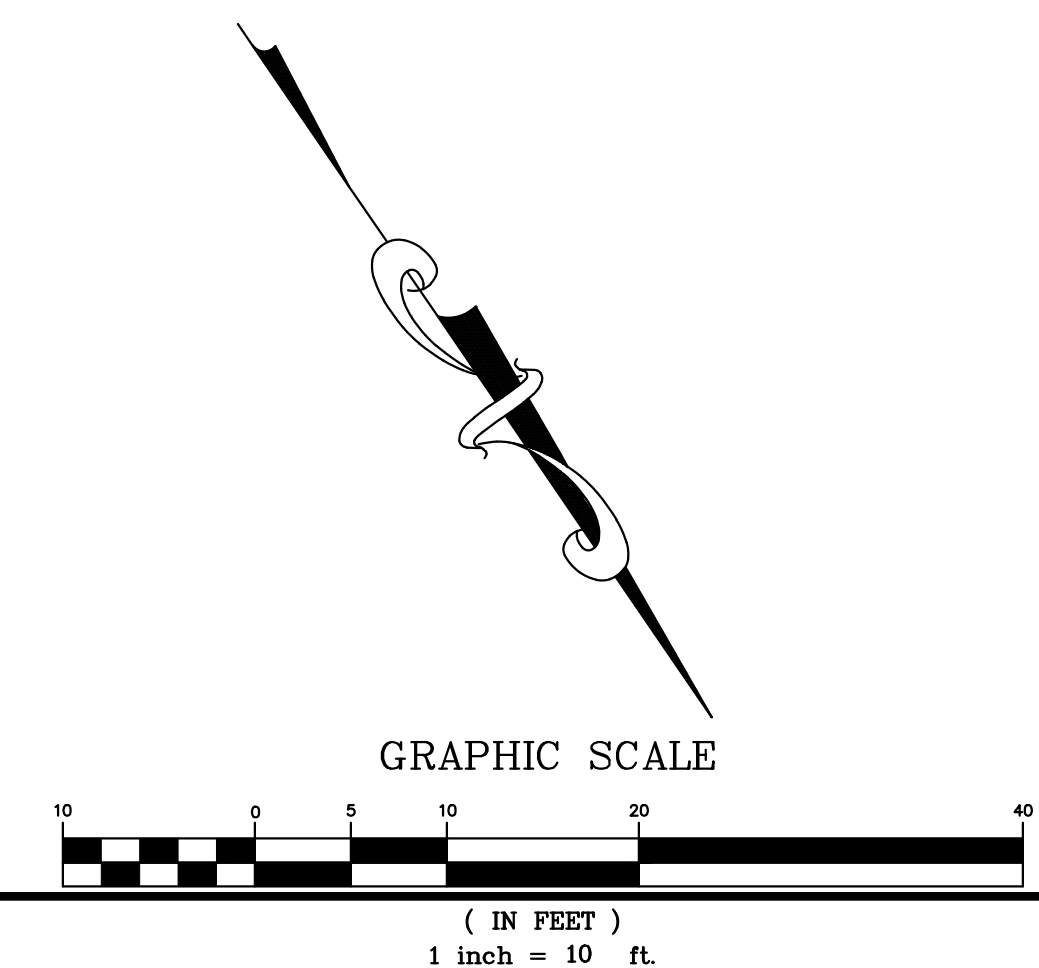
1. THE INTENT OF THE EROSION CONTROL PLAN IS TO MINIMIZE ANY WATER QUALITY IMPACTS IN THE FORM OF SEDIMENT POLLUTION TO MAIN CREEK & TRIBUTARIES.
2. A CONSTRUCTION ENTRANCE WILL BE INSTALLED PRIOR TO OF GRADING. LOCATION OF THE ENTRANCE MAY BE ADJUSTED BY THE CONTRACTOR TO FACILITATE GRADING OPERATIONS. ALL CONSTRUCTION TRAFFIC ENTERING THE PAVED ROAD MUST CROSS THE CONSTRUCTION ENTRANCE. THE ENTRANCE SHALL BE MAINTAINED IN A CONDITION THAT WILL PREVENT TRACKING OR FLOWING OF SEDIMENT ONTO PUBLIC RIGHTS-OF-WAY. THIS MAY REQUIRE PERIODIC TOP DRESSING WITH ADDITIONAL STONE AS CONDITION DEMAND, AND REPAIR OF ANY MEASURES USED TO TRAP SEDIMENTS.
3. WHEN NECESSARY, WHEELS SHALL BE CLEANED TO REMOVE SEDIMENT PRIOR TO ENTRANCE ONTO PUBLIC RIGHT-OF WAY. WHEN WASHING IS REQUIRED, IT SHALL BE DONE ON AN AREA STABILIZED WITH CRUSHED STONE WHICH DRAINS INTO AN APPROVED SEDIMENT BASIN. ALL SEDIMENT SHALL BE PREVENTED FROM ENTERING ANY STORM DRAIN, DITCH, OR WATERCOURSE THROUGH THE USE OF SAND BAGS, GRAVEL, BOARDS OR OTHER APPROVED METHODS.
4. THE EROSION AND SEDIMENT CONTROL MEASURES WILL BE OPERABLE DURING THE RAINY SEASON, OCTOBER 1 TO APRIL 15. BY OCTOBER 1, GRADING AND INSTALLATION OF STORM DRAINAGE AND EROSION AND SEDIMENT CONTROL FACILITIES WILL BE COMPLETED. NO GRADING WILL OCCUR BETWEEN OCTOBER 1 AND APRIL 15 UNLESS AUTHORIZED BY THE CITY REPRESENTATIVE.
5. DURING THE RAINY SEASON, ALL PAVED AREAS WILL BE KEPT CLEAR OF EARTH MATERIAL AND DEBRIS. THE SITE WILL BE MAINTAINED SO THAT A MINIMUM OF SEDIMENT-LADEN RUNOFF ENTERS THE STORM DRAINAGE SYSTEM.
6. ALL EROSION AND SEDIMENTATION CONTROL MEASURES SHALL BE IN ACCORDANCE WITH THE LATEST EDITION OF THE EROSION AND SEDIMENT CONTROL FIELD MANUAL OF THE CALIFORNIA REGIONAL WATER QUALITY CONTROL BOARD.

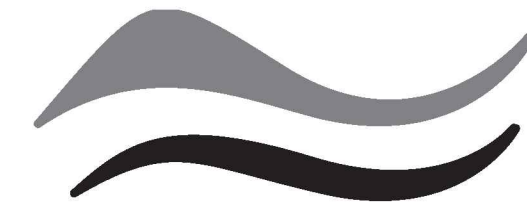
SAN MATEO COUNTY STANDARD NOTES:

1. EROSION CONTROL POINT OF CONTACT:
OWNER: GARY ERNST
EMAIL: GERNST@SBCGLOBAL.NET
OFFICE:
2. PERFORM CLEARING AND EARTH-MOVING ACTIVITIES ONLY DURING DRY WEATHER. MEASURES TO ENSURE ADEQUATE EROSION AND SEDIMENT CONTROL SHALL BE INSTALLED PRIOR TO EARTH-MOVING ACTIVITIES AND CONSTRUCTION
3. STABILIZE ALL DENUED AREAS AND MAINTAIN EROSION CONTROL MEASURES CONTINUOUSLY BETWEEN OCTOBER 1 AND APRIL 30.
4. STORE, HANDLE, AND DISPOSE OF CONSTRUCTION MATERIALS AND WASTES PROPERLY, SO AS TO PREVENT THEIR CONTACT WITH STORMWATER.
5. CONTROL AND PREVENT THE DISCHARGE OF ALL POTENTIAL POLLUTANTS, INCLUDING PAVEMENT CUTTING WASTES, PAINTS, CONCRETE, PETROLEUM PRODUCTS, CHEMICAL, WASH WATER OR SEDIMENTS AND NON-STORMWATER DISCHARGES TO STORM DRAINS AND WATERCOURSES.
6. AVOID CLEANING, FUELING, OR MAINTAINING VEHICLES ON-SITE, EXCEPT IN A DESIGNATED AREA WHERE WASH WATER IS CONTAINED AND TREATED.
7. LIMIT AND TIME APPLICATIONS OF PESTICIDES AND FERTILIZERS TO PREVENT POLLUTED RUNOFF.
8. LIMIT CONSTRUCTION ACCESS ROUTES TO STABILIZED, DESIGNATED ACCESS POINTS.
9. AVOID TRACKING DIRT OR OTHER MATERIALS OFF-SITE; CLEAN OFF-SITE PAVED AREAS AND SIDEWALKS USING DRY SWEEPING METHODS.
10. TRAIN AND PROVIDE INSTRUCTION TO ALL EMPLOYEES AND SUBCONTRACTORS REGARDING THE WATERSHED PROTECTION MAINTENANCE STANDARDS AND CONSTRUCTION BEST MANAGEMENT PRACTICES.
11. THE AREAS DELINEATED ON THE PLANS FOR PARKING, GRUBBING, STORAGE ETC., SHALL NOT BE ENLARGED OR "RUN OVER".
12. CONSTRUCTION SITES ARE REQUIRED TO HAVE EROSION CONTROL MATERIALS ON-SITE DURING THE "OFF-SEASON".
13. DUST CONTROL IS REQUIRED YEAR-ROUND.
14. EROSION CONTROL MATERIALS SHALL BE STORED ON-SITE.
15. USE OF PLASTIC SHEETING BETWEEN OCTOBER 1st. AND APRIL 30th IS NOT ACCEPTABLE, UNLESS FOR USE ON STOCKPILES WHERE THE STOCKPILE IS ALSO PROTECTED WITH FIBER ROLLS CONTAINING THE BASE OF THE STOCKPILE.
16. THE TREE PROTECTION SHALL BE IN PLACE BEFORE ANY GRADING, EXCAVATING OR GRUBBING IS STARTED.

DUST CONTROL NOTES:

1. WATER ALL CONSTRUCTION AND GRADING AREA AT LEAST TWICE DAILY.
2. COVER ALL TRUCKS HAULING SOIL, SAND, AND OTHER LOOSE MATERIALS, OR REQUIRE ALL TRUCKS TO MAINTAIN AT LEAST 2 FEET OF FREEBOARD.



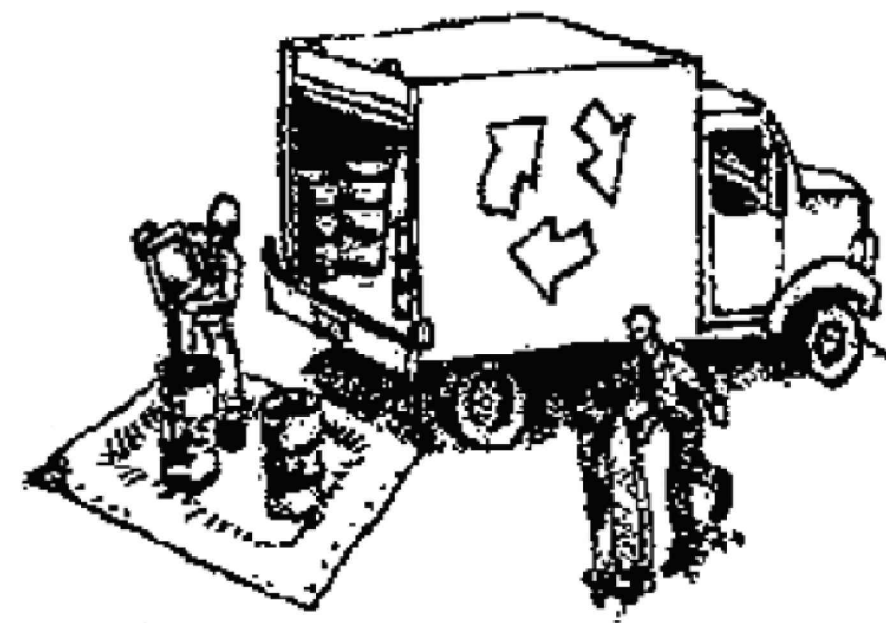


SAN MATEO COUNTYWIDE
**Water Pollution
 Prevention Program**
 Clean Water. Healthy Community.

Construction Best Management Practices (BMPs)

Construction projects are required to implement the stormwater best management practices (BMP) on this page, as they apply to your project, all year long.

Materials & Waste Management



Non-Hazardous Materials

- Berm and cover stockpiles of sand, dirt or other construction material with tarps when rain is forecast or if not actively being used within 14 days.
- Use (but don't overuse) reclaimed water for dust control.

Hazardous Materials

- Label all hazardous materials and hazardous wastes (such as pesticides, paints, thinners, solvents, fuel, oil, and antifreeze) in accordance with city, county, state and federal regulations.
- Store hazardous materials and wastes in water tight containers, store in appropriate secondary containment, and cover them at the end of every work day or during wet weather or when rain is forecast.
- Follow manufacturer's application instructions for hazardous materials and be careful not to use more than necessary. Do not apply chemicals outdoors when rain is forecast within 24 hours.
- Arrange for appropriate disposal of all hazardous wastes.

Waste Management

- Cover waste disposal containers securely with tarps at the end of every work day and during wet weather.
- Check waste disposal containers frequently for leaks and to make sure they are not overfilled. Never hose down a dumpster on the construction site.
- Clean or replace portable toilets, and inspect them frequently for leaks and spills.
- Dispose of all wastes and debris properly. Recycle materials and wastes that can be recycled (such as asphalt, concrete, aggregate base materials, wood, gyp board, pipe, etc.)
- Dispose of liquid residues from paints, thinners, solvents, glues, and cleaning fluids as hazardous waste.

Construction Entrances and Perimeter

- Establish and maintain effective perimeter controls and stabilize all construction entrances and exits to sufficiently control erosion and sediment discharges from site and tracking off site.
- Sweep or vacuum any street tracking immediately and secure sediment source to prevent further tracking. Never hose down streets to clean up tracking.

Equipment Management & Spill Control



Maintenance and Parking

- Designate an area, fitted with appropriate BMPs, for vehicle and equipment parking and storage.
- Perform major maintenance, repair jobs, and vehicle and equipment washing off site.
- If refueling or vehicle maintenance must be done onsite, work in a bermed area away from storm drains and over a drip pan or drop cloths big enough to collect fluids. Recycle or dispose of fluids as hazardous waste.
- If vehicle or equipment cleaning must be done onsite, clean with water only in a bermed area that will not allow rinse water to run into gutters, streets, storm drains, or surface waters.
- Do not clean vehicle or equipment onsite using soaps, solvents, degreasers, or steam cleaning equipment.

Spill Prevention and Control

- Keep spill cleanup materials (e.g., rags, absorbents and cat litter) available at the construction site at all times.
- Inspect vehicles and equipment frequently for and repair leaks promptly. Use drip pans to catch leaks until repairs are made.
- Clean up spills or leaks immediately and dispose of cleanup materials properly.
- Do not hose down surfaces where fluids have spilled. Use dry cleanup methods (absorbent materials, cat litter, and/or rags).
- Sweep up spilled dry materials immediately. Do not try to wash them away with water, or bury them.
- Clean up spills on dirt areas by digging up and properly disposing of contaminated soil.
- Report significant spills immediately. You are required by law to report all significant releases of hazardous materials, including oil. To report a spill: 1) Dial 911 or your local emergency response number, 2) Call the Governor's Office of Emergency Services Warning Center, (800) 852-7550 (24 hours).

Earthmoving



- Schedule grading and excavation work during dry weather.
- Stabilize all denuded areas, install and maintain temporary erosion controls (such as erosion control fabric or bonded fiber matrix) until vegetation is established.
- Remove existing vegetation only when absolutely necessary, and seed or plant vegetation for erosion control on slopes or where construction is not immediately planned.
- Prevent sediment from migrating offsite and protect storm drain inlets, gutters, ditches, and drainage courses by installing and maintaining appropriate BMPs, such as fiber rolls, silt fences, sediment basins, gravel bags, berms, etc.
- Keep excavated soil on site and transfer it to dump trucks on site, not in the streets.

Contaminated Soils

- If any of the following conditions are observed, test for contamination and contact the Regional Water Quality Control Board:
 - Unusual soil conditions, discoloration, or odor.
 - Abandoned underground tanks.
 - Abandoned wells
 - Buried barrels, debris, or trash.

Paving/Asphalt Work



- Avoid paving and seal coating in wet weather or when rain is forecast, to prevent materials that have not cured from contacting stormwater runoff.
- Cover storm drain inlets and manholes when applying seal coat, tack coat, slurry seal, fog seal, etc.
- Collect and recycle or appropriately dispose of excess abrasive gravel or sand. Do NOT sweep or wash it into gutters.
- Do not use water to wash down fresh asphalt concrete pavement.

Sawcutting & Asphalt/Concrete Removal

- Protect nearby storm drain inlets when saw cutting. Use filter fabric, catch basin inlet filters, or gravel bags to keep slurry out of the storm drain system.
- Shovel, absorb, or vacuum saw-cut slurry and dispose of all waste as soon as you are finished in one location or at the end of each work day (whichever is sooner!).
- If sawcut slurry enters a catch basin, clean it up immediately.

Concrete, Grout & Mortar Application



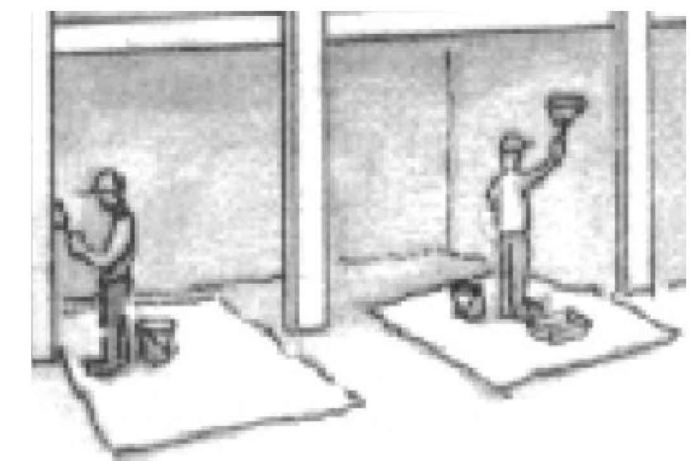
- Store concrete, grout, and mortar away from storm drains or waterways, and on pallets under cover to protect them from rain, runoff, and wind.
- Wash out concrete equipment/trucks offsite or in a designated washout area, where the water will flow into a temporary waste pit, and in a manner that will prevent leaching into the underlying soil or onto surrounding areas. Let concrete harden and dispose of as garbage.
- When washing exposed aggregate, prevent washwater from entering storm drains. Block any inlets and vacuum gutters, hose washwater onto dirt areas, or drain onto a bermed surface to be pumped and disposed of properly.

Landscaping



- Protect stockpiled landscaping materials from wind and rain by storing them under tarps all year-round.
- Stack bagged material on pallets and under cover.
- Discontinue application of any erodible landscape material within 2 days before a forecast rain event or during wet weather.

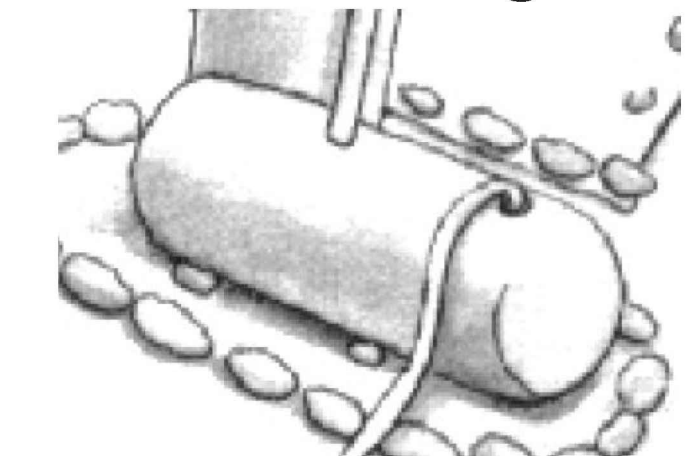
Painting & Paint Removal



Painting Cleanup and Removal

- Never clean brushes or rinse paint containers into a street, gutter, storm drain, or stream.
- For water-based paints, paint out brushes to the extent possible, and rinse into a drain that goes to the sanitary sewer. Never pour paint down a storm drain.
- For oil-based paints, paint out brushes to the extent possible and clean with thinner or solvent in a proper container. Filter and reuse thinners and solvents. Dispose of excess liquids as hazardous waste.
- Paint chips and dust from non-hazardous dry stripping and sand blasting may be swept up or collected in plastic drop cloths and disposed of as trash.
- Chemical paint stripping residue and chips and dust from marine paints or paints containing lead, mercury, or tributyltin must be disposed of as hazardous waste. Lead based paint removal requires a state-certified contractor.

Dewatering



- Discharges of groundwater or captured runoff from dewatering operations must be properly managed and disposed. When possible send dewatering discharge to landscaped area or sanitary sewer. If discharging to the sanitary sewer call your local wastewater treatment plant.
- Divert run-on water from offsite away from all disturbed areas.
- When dewatering, notify and obtain approval from the local municipality before discharging water to a street gutter or storm drain. Filtration or diversion through a basin, tank, or sediment trap may be required.
- In areas of known or suspected contamination, call your local agency to determine whether the ground water must be tested. Pumped groundwater may need to be collected and hauled off-site for treatment and proper disposal.

Storm drain polluters may be liable for fines of up to \$10,000 per day!

DATE:	
BY:	
DESCRIPTION:	
REV:	
MACLEOD AND ASSOCIATES CIVIL ENGINEERING • LAND SURVEYING 905 CENTER STREET • SAN CARLOS • CA 94070 • (650) 593-8580	
PREPARED FOR:	ERNST DEVELOPMENT, INC.
CONSTRUCTION BEST MANAGEMENT PRACTICES PLAN DOLTON AVENUE A.P.N. 049-110-080 UNINCORPORATED SAN MATEO COUNTY CALIFORNIA	
DRAWN BY:	DJK
DESIGNED BY:	VPG
CHECKED BY:	DGM
SCALE:	NONE
DATE:	08/24/20
DRAWING NO.	4716-CBMP-LOT 46
SHEET	C-4
	4 OF 4