

Edgewood Park and Preserve

10 Old Stage Coach Road, Redwood City, CA
Park Headquarters 650-368-6283
Police, Fire, or Medical Emergency 911

San Mateo County Parks

Reservations 650-363-4021
General information 650-363-4020
www.SMCoParks.org

The Department manages parks, trails, and historic sites to preserve public lands and provide opportunities for education and recreation. The system's properties include parks, preserves, trails, and historic sites located throughout the County and encompassing more than 17,000 acres.

The parks represent our region's wondrously diverse natural settings, from rugged tidepools, lush mountain forests, and remote campsites to Bayfront shoreline, sunny picnic areas, and popular playgrounds.

The Department sells annual passes, offering unlimited entrances to all County Parks for a year.

Support your parks

You can volunteer to help rangers protect and improve parklands and serve park visitors.

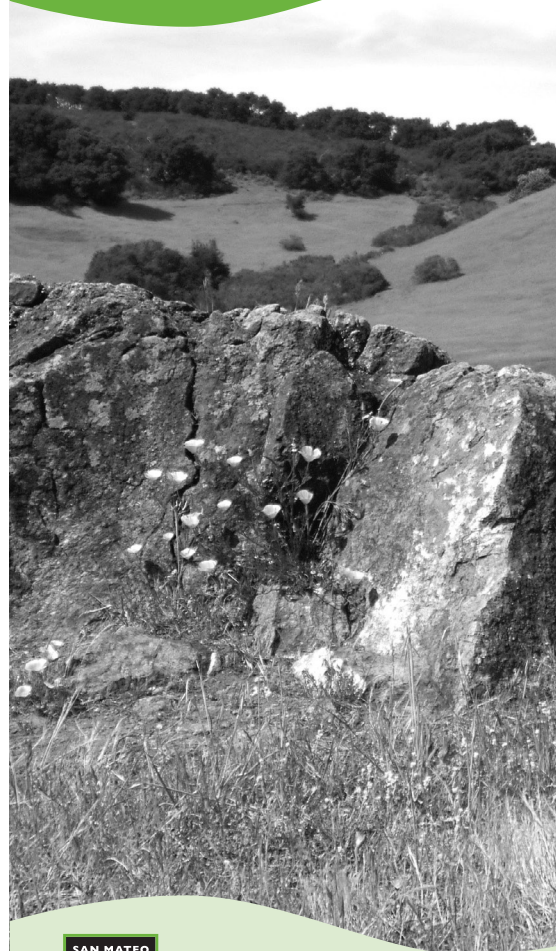
The San Mateo County Parks Foundation raises funds to improve the quality of County Parks for our community. For information, visit www.SupportParks.org.

Friends of Edgewood Natural Preserve (www.FriendsofEdgewood.org) and the Volunteer Horse Patrol (650-368-8200) promote protection and enjoyment of this park.

San Mateo County Parks
Wild places & friendly spaces

Edgewood

A San Mateo County Park
and Natural Preserve



Wild places & friendly spaces

Edgewood County Park and Natural Preserve

Known for its stunning spring wildflower displays, native plant communities and rare species, Edgewood's 467 acres of woodland and grassland are a wonderful place to experience and learn about nature.

Easily accessible from Highway 280 in Redwood City, Edgewood has a variety of trails for hikers and equestrians as well as several lovely picnic sites.

Interactive exhibits in the Bill and Jean Lane Education Center near the Preserve's main entrance encourage discovery and stewardship of the area's unique habitats.



Activities and facilities

A number of trails in Edgewood offer opportunities for hiking and horseback riding through the Park's diverse habitats. The Sylvan Trail is particularly popular with runners and hikers.

Several drop-in picnic sites and restrooms are located near the park entrance. There are no reservable facilities in Edgewood.

Docents with the nonprofit Friends of Edgewood lead wildflower walks in the Preserve each spring. For information, visit www.FriendsOfEdgewood.org.



Stuart B. Weiss

Natural features

Edgewood has a large exposed formation of serpentine rock, which hosts remnant populations of many native plants. The Park's grasslands are famous for their magnificent springtime wildflower displays.

The eastern slope of the Preserve is a cool oak woodland with ferns, mosses, and woody and herbaceous plants. The western slope of the ridge is a drier chaparral environment, which flattens out into open grasslands.





The central area of the Park features a prominent 800'-high ridge with views of Skyline Ridge, Huddart County Park, the San Andreas fault zone, Crystal Springs Reservoir, and the San Francisco Bay.

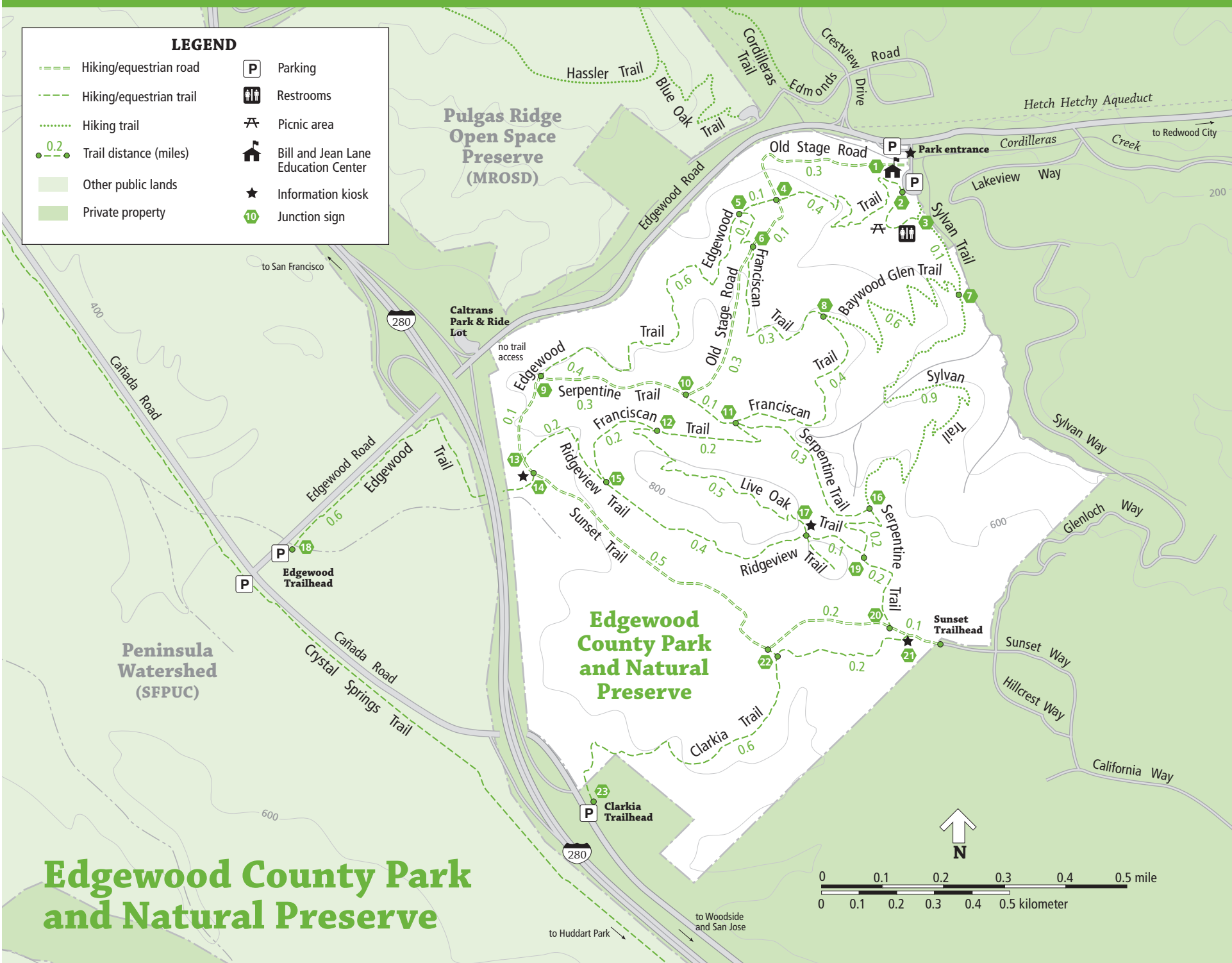
Ten rare or endangered plant species have been identified in Edgewood, including the endemic San Mateo thornmint.

Edgewood has been the focus of extensive habitat restoration and attempts to reintroduce the federally-listed threatened Bay Checkerspot butterfly, historically found in Edgewood and only a few other places on earth.

Deer, coyotes, bobcats, raccoons, and skunks are frequently sighted in the Park. Also found here are several species of reptiles, including rattlesnakes.

LEGEND

-  Hiking/equestrian road
-  Hiking/equestrian trail
-  Hiking trail
-  Trail distance (miles)
-  Other public lands
-  Private property
-  Parking
-  Restrooms
-  Picnic area
-  Bill and Jean Lane Education Center
-  Information kiosk
-  Junction sign



Edgewood County Park and Natural Preserve

Park hours and use

- Park hours** The Park opens at 8am. Closing time changes seasonally, and is posted.
- Ed Center** The Education Center is generally open Wednesday 9:30-12:30 and Saturday and Sunday 9:30-4.
- Pets** Pets are not allowed in the Park.
- Fires** Barbeques are allowed only in barbeque pits using charcoal; no portable barbeques.
- Smoking** No smoking in County parks, on trails, or at historical sites.

Please protect the Park's natural environment and do not disturb or remove any plants or animals.

Trails

Ridgeview Trail	.6 mile
Old Stage Road Trail	.7 mile
Clarkia Trail	.8 mile
Sylvan Trail	1.0 mile
Serpentine Trail	1.1 miles
Franciscan Trail	1.4 miles
Edgewood Trail	1.8 miles



- Hikers, runners, and equestrians share these trails. Please be alert and courteous to all trail users.
 - Always yield to equestrians by stepping to the edge of the path.
 - Weather conditions may cause seasonal trail closures.
- For more trail information and routes, visit www.SMCoParks.org.



Kathy Korholz