




SMC Recovery Initiative

Creating a Better Future through
Collaboration, Advancing Equity,
and Inclusion



San Mateo County's Recovery Initiative is a collaboration among local government agencies, community-based organizations and nonprofits, private partners, and residents to promote inclusive recovery and leverage the collective capacity of the whole community to **build a more equitable, healthy, and connected San Mateo County.**

Recovery Initiative

Public Health



Equity



Fiscal
Responsibility



Communitywide
Collaboration



How did we engage the community?



Advancing Equity



The effects of COVID-19 are amplifying inequities, but the recovery is an opportunity for a collective restart. To create an equitable community, systems, policies, and practices of oppression must be dismantled. Our new systems must eliminate disparities and provide access to quality services for all unserved, underserved, under-resourced, and ineffectively served individuals and families.



Decision Making and Solutions



Understanding Data



Burdens and Benefits



Accountability, Communication, and Community Engagement

Where is the need?



65%

of COVID cases are residents of color and ethnic minorities



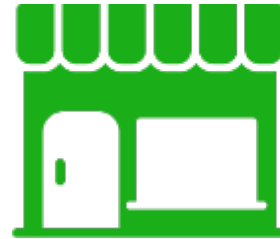
10,156

immigrants have received \$1,000 in financial assistance



250%

increase in food distribution by Second Harvest



600+

small businesses have applied for financial assistance



4,411

school children lack Wi-Fi/tools for distance learning



20,000

low-income workers have lost their jobs

Our Path to Recovery

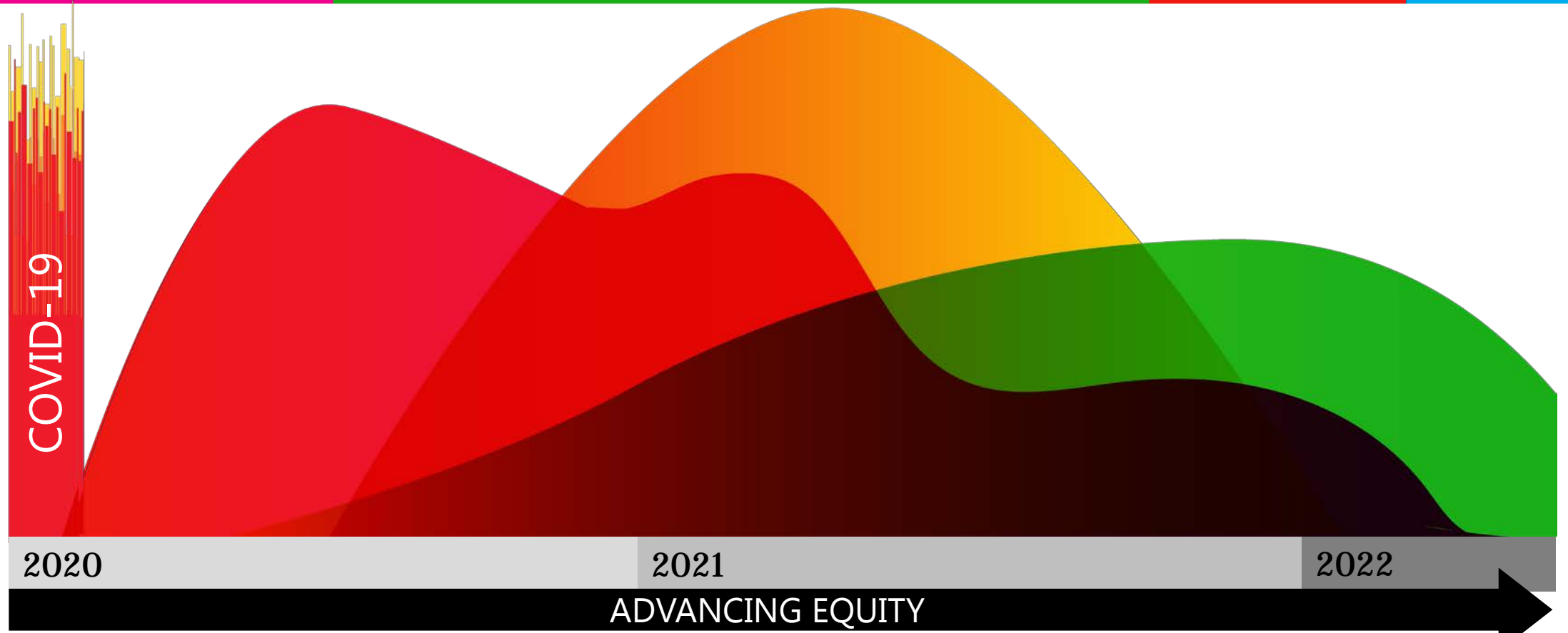


✓ Address critical and immediate needs

✓ Create community capacity and consumer confidence

✓ Build our better future

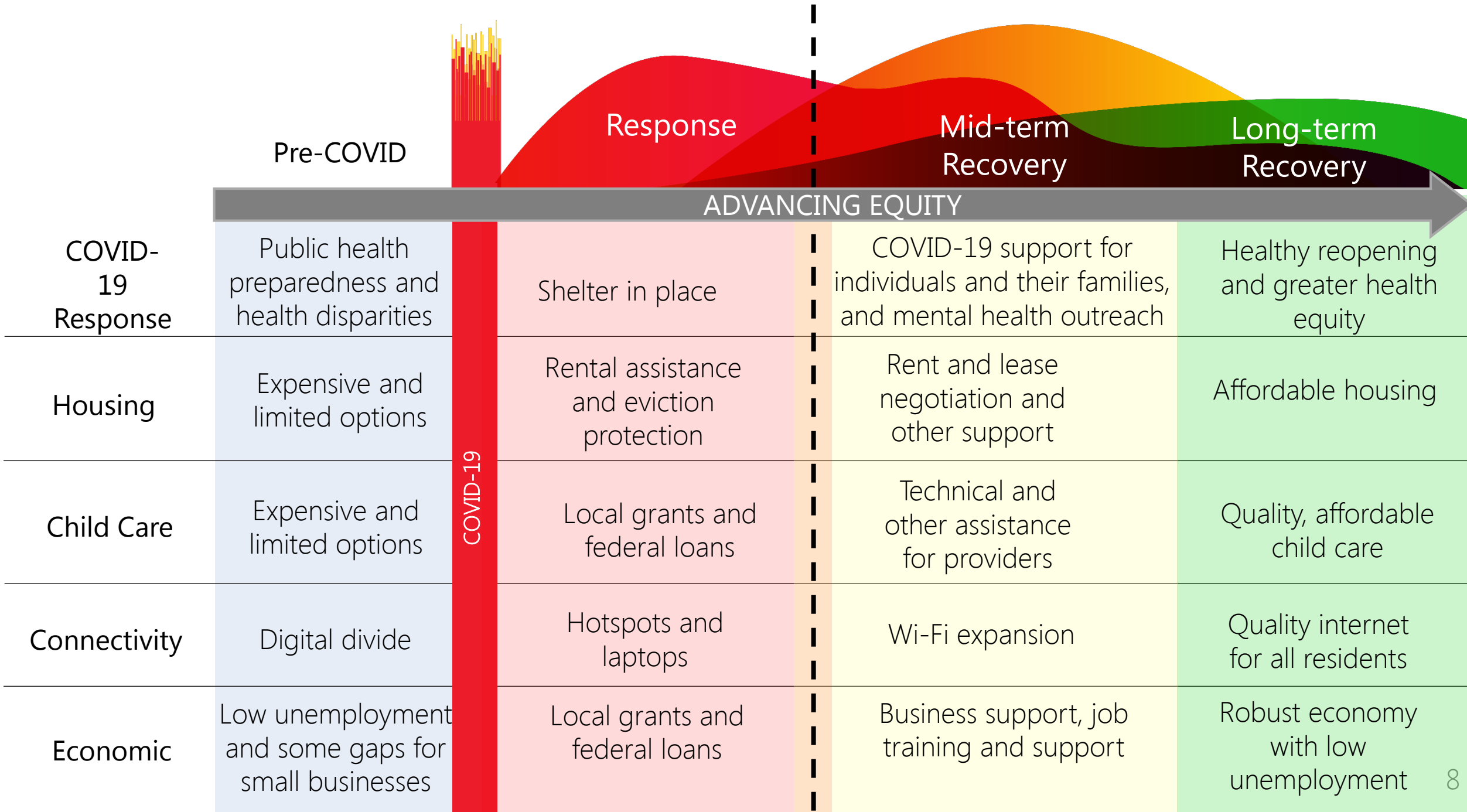
Timeline for Recovery



Response
Address critical
immediate needs

Mid-term Recovery
Create community capacity
and consumer confidence

Long-term Recovery
Build our better future

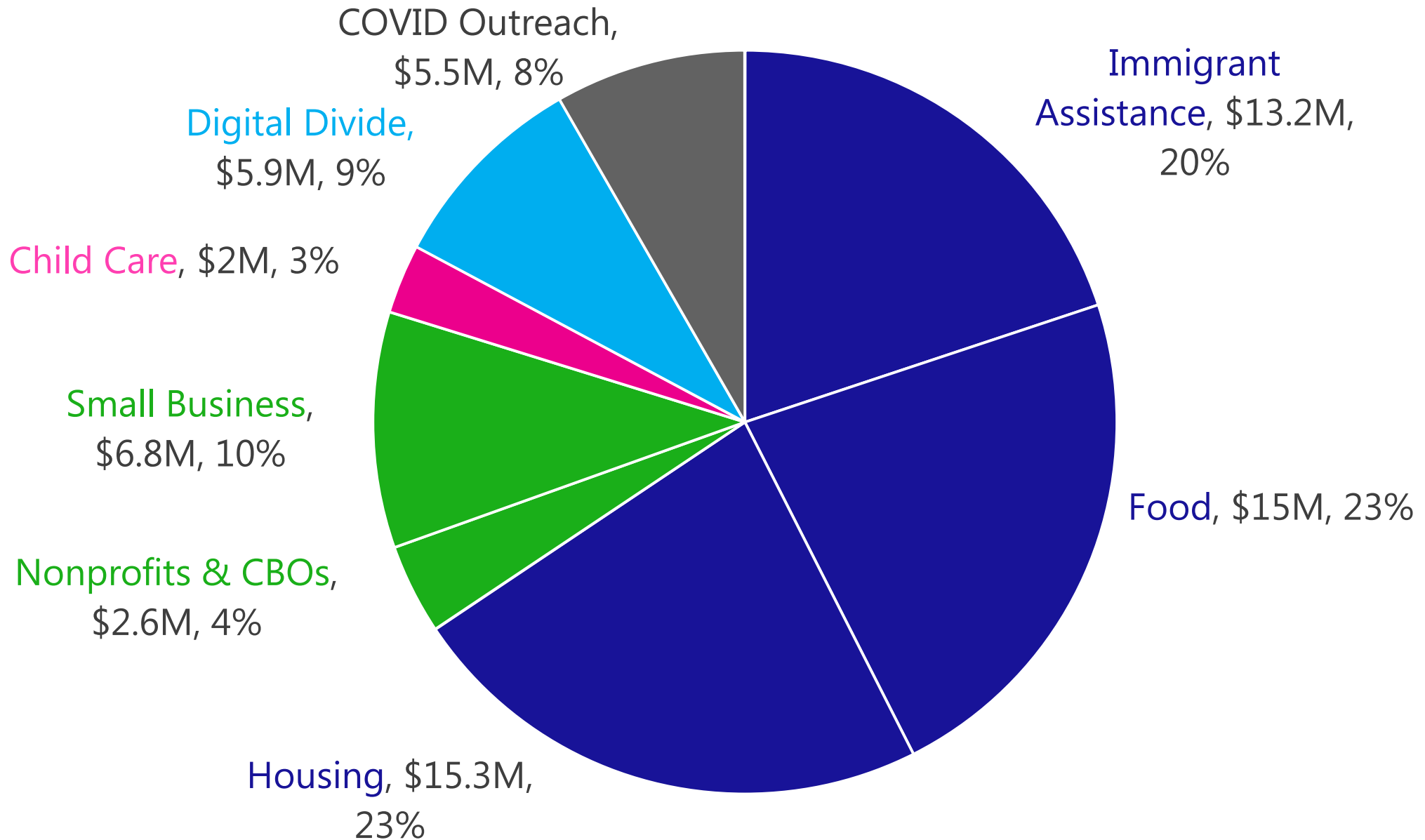




Response and Recovery

Programs and Investments

Funding Comittments: \$66.3 M



Basic Needs: Housing



23,000

Extremely low-income
renters Countywide

4,713

Requests for emergency
financial assistance

Cores Services Agencies Rental Assistance Program

- Over \$11 in contributions, 3M County

Small Property Owner Program

- \$2M – opened 10/14

Immigrant Assistance Program

- \$12.6 M in contributions, \$4M County
- 15,908 pre-applications issued

Cumulative Data as of September 2020

Basic Needs: Food



250%

Increase in need for
food provided by
Second Harvest
Food Bank

School Lunch Program

- \$1M County funding match

Second Harvest Food Bank

- \$2M County funding for Board

Great Plates Delivered

- Continued through November 9th
- 69 restaurants, 880 employees, and 2,978 clients

Cumulative Data as of September 2020

Digital Divide



26,300

Households
without Wi-Fi

4,411

Children
reporting Wi-
Fi issues

Pilot Project - \$6.3M communitywide

- Benefits 2,700 students
- Free public WIFI, mobile units, hotspots, Chromebooks
- Cities/Districts
 - East Palo Alto
 - Redwood City/North Fair Oaks
 - La Honda Pescadero
 - San Mateo
 - Daly City
 - South San Francisco

Cumulative Data as of September 2020

Local Economy: Businesses



20,000

Low-income jobs lost

9.2%

Unemployment

268

Known business
closures

SMC Strong Phase I

- \$3.5M raised for 350 grantees
 - 1,232 total applications, \$8.8M not funded

SMC Strong: Geographically Targeted Business Assistance

- \$2.5M Renaissance Entrepreneur Center
- NOVA Supported Employment



Moving Forward

How do we implement recommendations, track progress, and engage the community?

Implementation Groups

Public and Mental Health



Digital Divide



Basic Needs



Child Care and Out-of-School Care



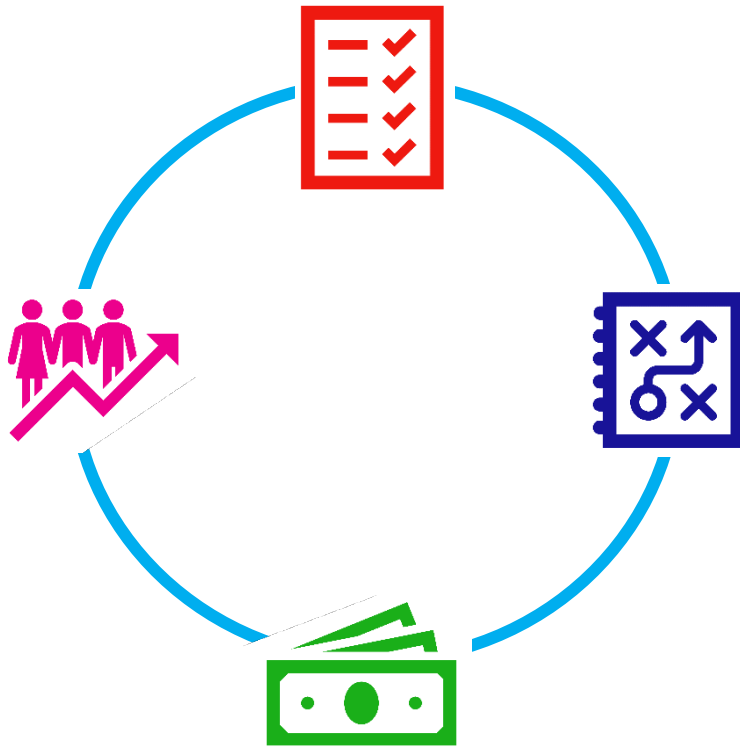
Economic Recovery



Transportation



Implementation Groups



- Building on response programs
- Assess needs, evaluate progress and identify gaps and opportunities
- Develop a collaborative workplan to fill gaps and meet needs
- Identify resources, funding options
- Take action, track progress

Track and Share Recovery Progress



Website Launched October 9th
SMCRecovery.org

Website “Learn more” Page



The screenshot shows a website page with a blue navigation bar at the top containing 'Home', 'Learn more', and 'Join us!'. A red arrow points to the 'Learn more' link. Below the navigation bar is a large heart-shaped graphic with the text 'SMC Recovery Initiative'. To the right of the heart is a paragraph of text describing the initiative. Below this is a section titled 'The San Mateo County Recovery Initiative brought together over 160 government, nonprofit, and private sector partners to prioritize recovery strategies in nine focus areas.' This section contains nine focus areas, each with an icon and a title:

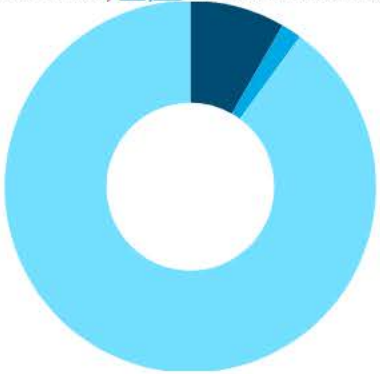
- Reduce the Spread of COVID-19**
- Provide Quality, Safe, and Affordable Child Care**
- Support Local Businesses, Community-based Organizations, and Nonprofits**
- Meet the essential Needs of the County's Most Vulnerable Populations**
- Provide Safe Public and Active Transportation**
- Bridge the Digital Divide**
- Prepare the Workforce for New and Future Jobs**
- Support Distance Learning and Out-of-School Care**
- Promote Mental Health and Wellness**

Indicators

Households without WiFi

94

households in **Census Tract 603200** have no internet connection, **6.7%** of all households.

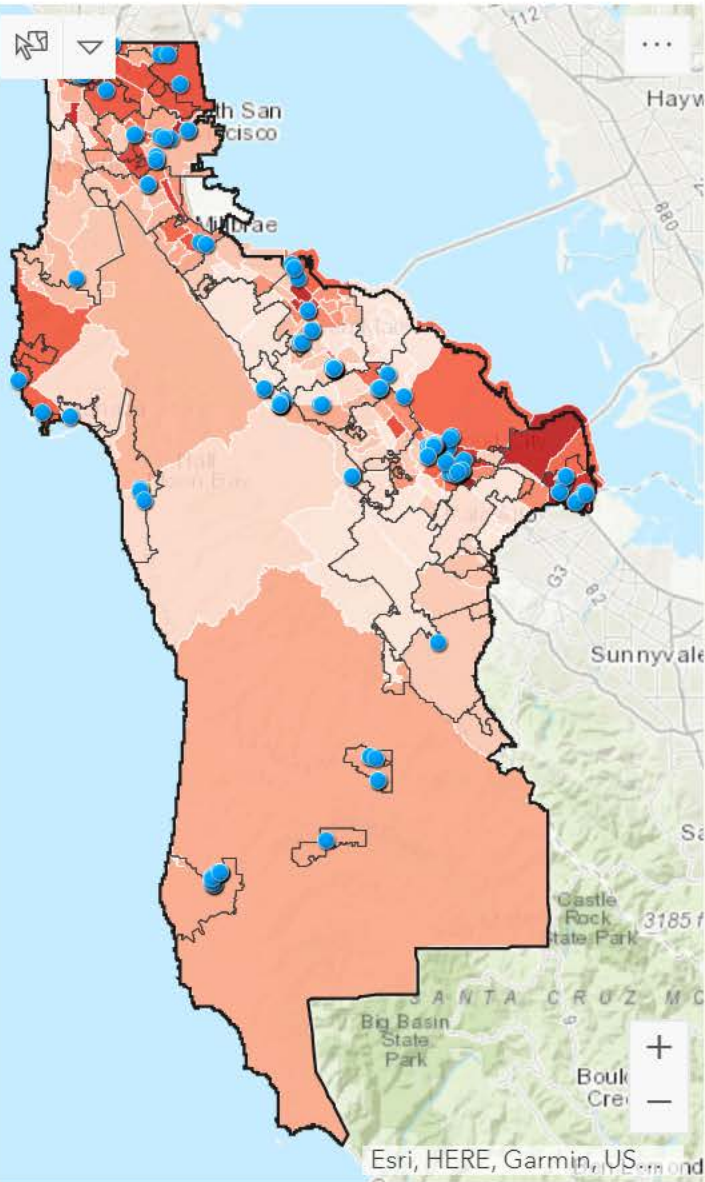


Current Programs

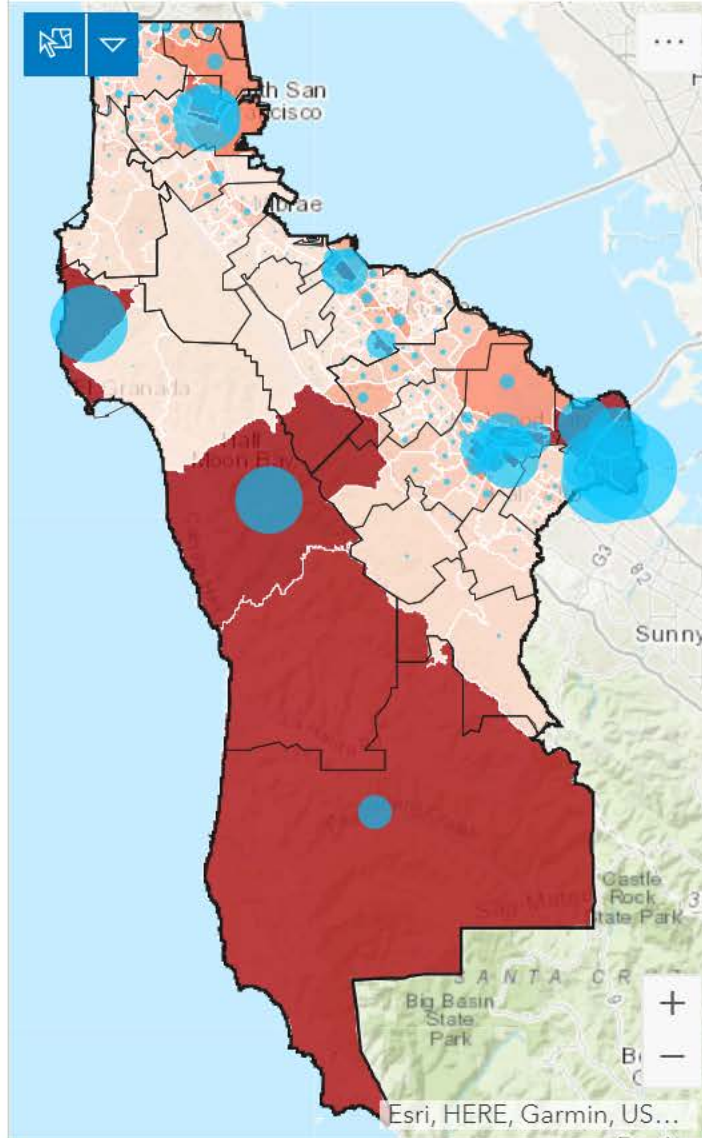
San Mateo County Public WiFi

186 **1.3 M**
of Locations Avg. Sessions/Month

Households Without Internet Census Tract Level San Mateo County WiFi Locations



Student Internet Connectivity Issues Census Tract Level Reported by 23 School Districts



Indicators

Students without Internet

23 **4,411**
of School Districts # of students with no internet

7

students have reported no internet connection in **Census Tract 601501**

Current Programs

Student Internet Access Pilot Initiative

3 **3**
School Districts

1. Ravenswood Elementary
2. Redwood City Elementary
3. La Honda Pescadero

325 **4**
of Hotspots Distributed # of Mobile WiFi Units

Comcast Xfinity WiFi
325
 Subsidized Promo Codes

Sources:

Website “Join us” page



Home Learn more ▾ Join us!

Join us

Name *


First

Last


Email *

Comment or Message *

Submit

 Help stop the spread of COVID-19.
OUR COMEBACK DEPENDS ON
ALL OF US

SAN MATEO COUNTY
STRONG

 **COVID-19 Public Call Center**
Call 211 or 800-273-6222
For non-emergency, non-medical questions
24 hours a day, 7 days a week

Questions?

Peggy Jensen

Deputy County Manager, San Mateo County

pjensen@smcgov.org

Danielle Lee

Assistant Director, Office of Sustainability, San Mateo County

dlee@smcgov.org

Jessica Stanfill Mullin

Sustainability Program Manager, Livable Communities, Office of Sustainability, San Mateo County

jmullin@smcgov.org